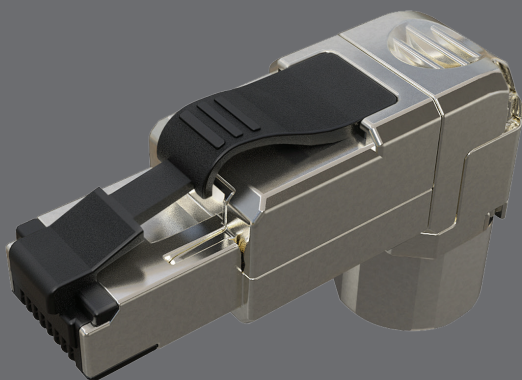


Universal MPTL 90° plug Solarix CAT6 STP RJ45 toolless



Product number:
11910011

Type number:
SXRJ45-6-STP-BK-SA-U

EAN barcode:
8595684704457



Key features

- Robust and highly reliable category 6/Class E angled plug
- Designed for ethernet protocols, including 2.5GBASE-T and 5GBASE-T
- Very easy and quick installation, toolless termination, for both solid and stranded wires (AWG 26-23)
- Dismountable with easy reinstallation
- Designed for shielded and unshielded cables up to Ø 8,0 mm with wires up to Ø 1,5 mm (incl. PE insulation)
- 50 µin gold contact plating
- The plug meets the ISO/IEC 11801, EN 50173, and ANSI/TIA 568.2-D cabling standards and its performance is suitable for modular plug terminated link (MPTL)
- It is possible to install the terminated cable to 4 different directions at an angle of 90°
- The colour of the plug is black (plastic parts) and silver (metal body)

Cabling standards

General standards
Product standards

EN 50173-1, EN 50173-2, ISO/IEC 11801-1, ISO/IEC 11801-2, ANSI/TIA 568.2-D
EN 60603-7-5

Supported protocols

| | 10BASE-T | 100BASE-TX | 1000BASE-T | 2.5GBASE-T | 5GBASE-T |
|--|----------|------------|------------|------------|----------|
| Supported by the SXRJ45-6-STP-BK-SA-U plug | YES | YES | YES | YES | YES |

Supported PoE

| | 802.3af | 802.3at |
|--|---------|---------|
| PoE type | Type 1 | Type 2 |
| Maximum current | 350 mA | 600 mA |
| No. of pairs used | 2 | 2 |
| Supported by the SXRJ45-6-STP-BK-SA-U plug | YES | YES |



Physical parameters

| | |
|-----------------------------------|---|
| Plug construction | STP, dismountable |
| Plug type | RJ45 8p8c |
| Min. contacts lifetime | 1000 connections/disconnections |
| Contacts plating | 50 µin gold |
| Termination | toolless |
| Size and type of conductor | AWG 26 – 23, solid and stranded |
| Max. cable size | Ø 8.0 mm |
| Max. wire size (incl. insulation) | Ø 1.5 mm |
| Material of non-metallic parts | FR plastic according to UL94-0 |
| Plug body colour | black (plastic parts) and silver (metal body) |

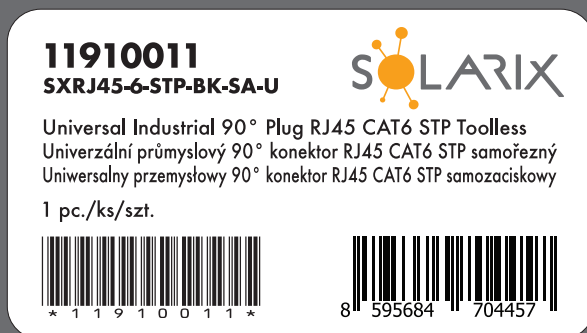
Operation and storage

| | |
|-------------------------|--------------|
| Storage temperature | -25 to 70 °C |
| Operating temperature | -40 to 70 °C |
| Max. operating humidity | 93% |

Logistic parameters

| | |
|-----------------------------------|---|
| Plug packaging size (h x w x d) | 165 mm x 90 mm x 15 mm, plastic bag |
| Weight | 30 g |
| Included in the package | 1 x plug |
| Master packaging | 280x plug |
| Master packaging size (h x w x d) | 230 mm x 515 mm x 400 mm, carton box |
| Batch marking | yes (on the product, its packaging and on the transport master box) |
| Batch and product numbers barcode | IDAutomation Code 39, ANSI/ISO/AIM specification |
| EAN code type | EAN-13 |

Plug label



Solarix warranties

Standard warranty **5 years**



Related products

| Product Number | Type Number | Description |
|----------------|------------------------|--|
| 26000003 | SXKD-6-FTP-PVC | Installation Cable Solarix CAT6 FTP PVC Eca 500m/reel |
| 26000005 | SXKD-6-FTP-LSOH | Installation Cable Solarix CAT6 FTP LSOH Dca-s2,d2,a1 500m/reel |
| 27655194 | SXKD-6-FTP-PE | Installation Cable Solarix CAT6 FTP PE Fca Outdoor 500m/reel |
| 26000001 | SXKD-6-UTP-PVC | Installation Cable Solarix CAT6 UTP PVC Eca 500m/reel |
| 26100001 | SXKD-6-UTP-PVC | Installation Cable Solarix CAT6 UTP PVC Eca 305m/box |
| 27724160 | SXKD-6-UTP-PVC | Installation Cable Solarix CAT6 UTP PVC Eca 100m/box |
| 26000021 | SXKD-6-UTP-LSOH | Installation Cable Solarix CAT6 UTP LSOH Dca-s2,d2,a1 500m/reel |
| 26100021 | SXKD-6-UTP-LSOH | Installation Cable Solarix CAT6 UTP LSOH Dca-s2,d2,a1 305m/box |
| 27724161 | SXKD-6-UTP-LSOH | Installation Cable Solarix CAT6 UTP LSOH Dca-s2,d2,a1 100m/box |
| 26000033 | SXKD-6-UTP-LSOHFR-B2ca | Installation Cable Solarix CAT6 UTP LSOHFR B2ca-s1,d1,a1 500m/reel |
| 27655193 | SXKD-6-UTP-PE | Installation Cable Solarix CAT6 UTP PE Fca Outdoor 500m/reel |

