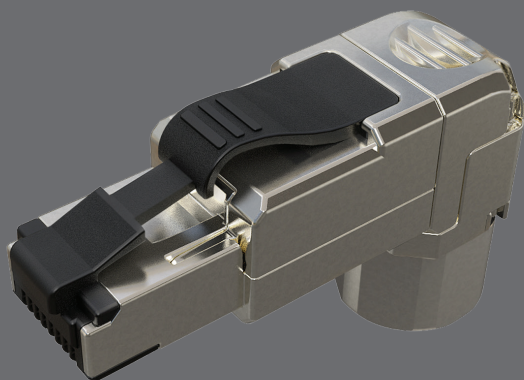


Universal MPTL 90° plug Solarix CAT6A STP RJ45 toolless



Product number:
11910012

Type number:
SXRJ45-6A-STP-BK-SA-U

EAN barcode:
8595684704464



Key features

- Robust and highly reliable category 6A/Class E_A angled plug
- Designed for ethernet protocols, including 2.5GBASE-T, 5GBASE-T, and 10GBASE-T
- Very easy and quick installation, toolless termination, for both solid and stranded wires (AWG 26-23)
- Dismountable with easy reinstallation
- Designed for shielded and unshielded cables up to Ø 8,0 mm with wires up to Ø 1,5 mm (incl. PE insulation)
- 50 µin gold contact plating
- The plug meets the ISO/IEC 11801, EN 50173, and ANSI/TIA 568.2-D cabling standards and its performance is suitable for modular plug terminated link (MPTL)
- It is possible to install the terminated cable to 4 different directions at an angle of 90°
- The colour of the plug is black (plastic parts) and silver (metal body)

Cabling standards

General standards
Product standards

EN 50173-1, EN 50173-2, ISO/IEC 11801-1, ISO/IEC 11801-2, ANSI/TIA 568.2-D
EN 60603-7-51, IEC 60512-99-002

Supported protocols

	10BASE-T	100BASE-TX	1000BASE-T	2.5GBASE-T	5GBASE-T	10GBASE-T
Supported by the SXRJ45-6A-STP-BK-SA-U plug	YES	YES	YES	YES	YES	YES

Supported PoE

	802.3af	802.3at	802.3bt	802.3bt
PoE type	Type 1	Type 2	Type 3	Type 4
Maximum current	350 mA	600 mA	600 mA	960 mA
No. of pairs used	2	2	4	4
Supported by the SXRJ45-6A-STP-BK-SA-U plug	YES	YES	YES	YES



Physical parameters

Plug construction	STP, dismountable
Plug type	RJ45 8p8c
Min. contacts lifetime	1000 connections/disconnections
Contacts plating	50 µin gold
Termination	toolless
Size and type of conductor	AWG 26 – 23, solid and stranded
Max. cable size	Ø 8.0 mm
Max. wire size (incl. insulation)	Ø 1.5 mm
Material of non-metallic parts	FR plastic according to UL94-0
Plug body colour	black (plastic parts) and silver (metal body)

Operation and storage

Storage temperature	-25 to 70 °C
Operating temperature	-40 to 70 °C
Max. operating humidity	93%

Logistic parameters

Plug packaging size (h x w x d)	165 mm x 90 mm x 15 mm, plastic bag
Weight	30 g
Included in the package	1 x plug
Master packaging	280x plug
Master packaging size (h x w x d)	230 mm x 515 mm x 400 mm, carton box
Batch marking	yes (on the product, its packaging and on the transport master box)
Batch and product numbers barcode	IDAutomation Code 39, ANSI/ISO/AIM specification
EAN code type	EAN-13

Plug label



Solarix warranties

Standard warranty **5 years**



Related products

Product Number	Type Number	Description
26000025	SXKD-6A-STP-LSOH	Installation Cable Solarix CAT6A STP LSOH Dca-s1,d2,a1 500m/reel
26000037	SXKD-6A-STP-LSOH-B2ca	Installation Cable Solarix CAT6A STP LSOH B2ca-s1,d1,a1 500m/reel
26000038	SXKD-6A-FFTP-LSOH	Installation Cable Solarix CAT6A FFTP LSOH Dca-s2,d2,a1 500m/reel
26000040	SXKD-6A-STP-PE	Installation Cable Solarix CAT6A STP PE Fca 500m/reel
27000007	SXKD-7-SSTP-LSOH	Installation Cable Solarix CAT7 SSTP LSOH Cca-s1,d1,a1 1000 MHz 500m/reel
27000010	SXKD-7-SSTP-LSOHFR-B2ca	Installation Cable Solarix CAT7 SSTP LSOHFR B2ca-s1,d1,a1 1000 MHz 500m/reel

