
Cable ID	Summary	Test Limit	Length	Headroom	Date / Time
Sample report ID1(RC)	PASS	EN50173 PL2 Class Ea	25.4 m	8.2 dB (NEXT)	25.07.2019 08:33 AM
Sample report ID2(RC)	PASS	EN50173 PL2 Class Ea	58.0 m	8.0 dB (NEXT)	25.07.2019 08:33 AM
Sample report ID3(RC)	PASS	EN50173 PL2 Class Ea	27.9 m	7.6 dB (NEXT)	25.07.2019 08:33 AM
Sample report ID4(RC)	PASS	EN50173 PL2 Class Ea	27.9 m	7.5 dB (NEXT)	25.07.2019 08:33 AM
Sample report ID5(RC)	PASS	EN50173 PL2 Class Ea	50.1 m	7.4 dB (NEXT)	25.07.2019 08:33 AM



Cable ID: Sample report ID1(RC)

Date / Time: 25.07.2019 08:33:34 AM

Headroom 8.2 dB (NEXT 36-45)

Test Limit: EN50173 PL2 Class Ea

Cable Type: SXXD-6A-STP-LSOFR-B2ca

NVP: 75.0%

Operator: INTELEK spol. s r.o.

Software Version: V6.1 Build 3

Limits Version: V7.0

Calibration Date:

Main (Module): 06.12.2018

Remote (Module): 06.12.2018

Test Summary: PASS

Model: DSX-5000

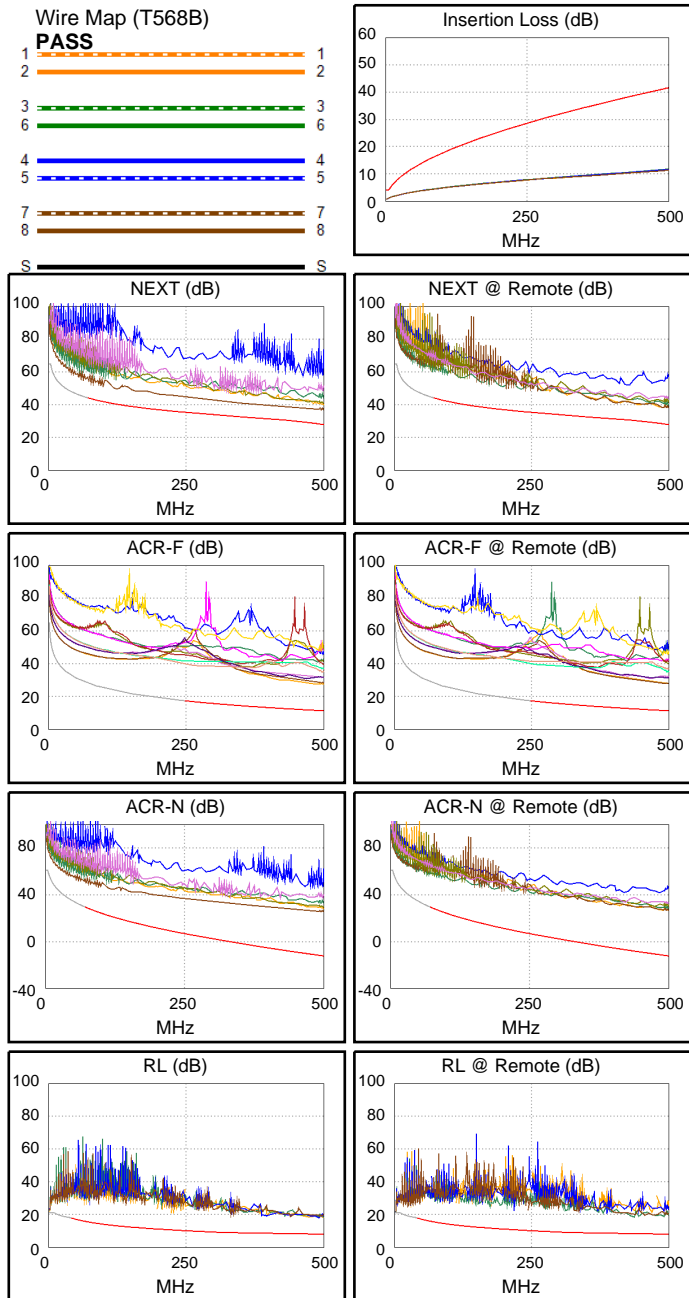
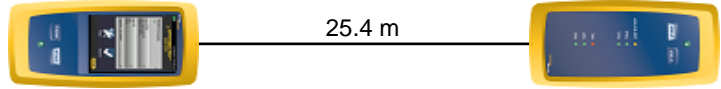
Main S/N: 2525584

Remote S/N: 2492746

Main Adapter: DSX-PLA004

Remote Adapter: DSX-PLA004

Length (m), Limit 90.0	[Pair 45]	25.4
Prop. Delay (ns), Limit 496	[Pair 36]	116
Delay Skew (ns), Limit 43	[Pair 36]	3
Resistance (ohms), Limit 20.60	[Pair 36]	4.06
Insertion Loss Margin (dB)	[Pair 36]	29.9
Frequency (MHz)	[Pair 36]	500.0
Limit (dB)	[Pair 36]	41.6



Worst Case Margin Worst Case Value

PASS	MAIN	SR	MAIN	SR
Worst Pair	36-45	12-36	36-45	36-45
NEXT (dB)	8.2	9.2	8.8	10.2
Freq. (MHz)	358.0	468.0	495.0	500.0
Limit (dB)	32.4	29.4	28.1	27.8
Worst Pair	36	36	36	36
PS NEXT (dB)	8.7	8.5	9.3	9.3
Freq. (MHz)	469.0	477.0	500.0	499.0
Limit (dB)	26.5	26.1	25.0	25.0

PASS	MAIN	SR	MAIN	SR
Worst Pair	12-36	12-36	12-36	36-12
ACR-F (dB)	15.9	15.8	16.1	16.5
Freq. (MHz)	477.0	4.3	490.0	490.0
Limit (dB)	11.7	52.7	11.4	11.4
Worst Pair	36	36	36	36
PS ACR-F (dB)	17.2	17.2	17.3	17.9
Freq. (MHz)	4.3	4.5	477.0	500.0
Limit (dB)	49.7	49.2	8.7	8.3

PASS	MAIN	SR	MAIN	SR
Worst Pair	36-45	12-45	36-45	36-45
ACR-N (dB)	21.0	27.6	37.8	38.8
Freq. (MHz)	72.5	73.5	500.0	500.0
Limit (dB)	29.2	29.0	-12.4	-12.4
Worst Pair	36	36	36	36
PS ACR-N (dB)	22.3	29.0	37.9	37.8
Freq. (MHz)	68.0	71.0	500.0	499.0
Limit (dB)	27.6	27.0	-15.3	-15.2

PASS	MAIN	SR	MAIN	SR
Worst Pair	36	78	36	36
RL (dB)	9.3	9.5	9.3	10.3
Freq. (MHz)	473.0	46.0	473.0	490.0
Limit (dB)	8.0	17.4	8.0	8.0

Compliant Network Standards:
 10BASE-T 100BASE-TX 100BASE-T4
 1000BASE-T 2.5GBASE-T 5GBASE-T
 10GBASE-T ATM-25 ATM-51
 ATM-155 100VG-AnyLan TR-4
 TR-16 Active TR-16 Passive



Cable ID: Sample report ID2(RC)

Date / Time: 25.07.2019 08:33:34 AM

Headroom 8.0 dB (NEXT 36-45)

Test Limit: EN50173 PL2 Class Ea

Cable Type: SXXD-6A-STP-LSOHFR-B2ca

NVP: 75.0%

Operator: INTELEK spol. s r.o.

Software Version: V6.1 Build 3

Limits Version: V7.0

Calibration Date:

Main (Module): 06.12.2018

Remote (Module): 06.12.2018

Test Summary: PASS

Model: DSX-5000

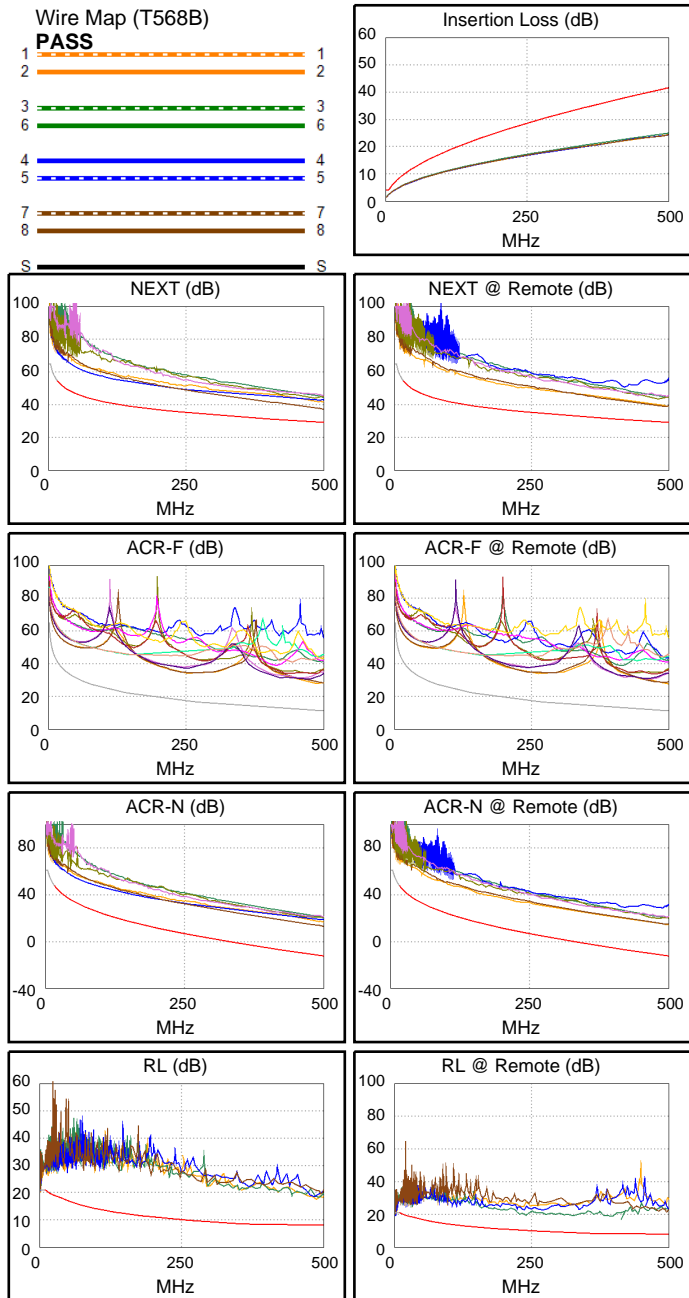
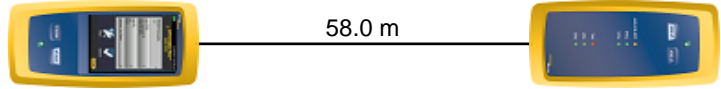
Main S/N: 2525584

Remote S/N: 2492746

Main Adapter: DSX-PLA004

Remote Adapter: DSX-PLA004

Length (m), Limit 90.0	[Pair 45]	58.0
Prop. Delay (ns), Limit 496	[Pair 36]	264
Delay Skew (ns), Limit 43	[Pair 36]	6
Resistance (ohms), Limit 20.60	[Pair 36]	8.85
Insertion Loss Margin (dB)	[Pair 36]	16.7
Frequency (MHz)	[Pair 36]	500.0
Limit (dB)	[Pair 36]	41.6



Worst Case Margin Worst Case Value

PASS	MAIN	SR	MAIN	SR
Worst Pair	36-45	36-45	36-45	36-45
NEXT (dB)	8.0	9.5	8.1	9.5
Freq. (MHz)	499.0	493.0	500.0	493.0
Limit (dB)	29.3	29.4	29.2	29.4
Worst Pair	36	36	36	36
PS NEXT (dB)	8.8	9.0	9.1	9.1
Freq. (MHz)	485.0	496.0	500.0	497.0
Limit (dB)	26.7	26.5	26.4	26.4

PASS	MAIN	SR	MAIN	SR
Worst Pair	12-36	12-36	12-36	12-36
ACR-F (dB)	16.4	16.4	16.4	16.4
Freq. (MHz)	480.0	500.0	480.0	500.0
Limit (dB)	11.6	11.3	11.6	11.3
Worst Pair	36	36	36	36
PS ACR-F (dB)	16.8	17.5	16.9	17.7
Freq. (MHz)	477.0	4.5	480.0	487.0
Limit (dB)	8.7	49.2	8.6	8.5

PASS	MAIN	SR	MAIN	SR
Worst Pair	12-36	12-36	36-45	12-36
ACR-N (dB)	20.3	22.5	25.4	26.6
Freq. (MHz)	26.0	15.3	500.0	498.0
Limit (dB)	42.4	48.2	-12.4	-12.3
Worst Pair	12	36	36	36
PS ACR-N (dB)	21.2	22.3	25.9	25.9
Freq. (MHz)	15.5	15.3	500.0	499.0
Limit (dB)	45.7	45.8	-15.3	-15.2

PASS	MAIN	SR	MAIN	SR
Worst Pair	12	12	12	36
RL (dB)	7.6	7.2	9.5	10.8
Freq. (MHz)	11.0	9.5	488.0	397.0
Limit (dB)	20.8	21.0	8.0	8.0

Compliant Network Standards:
 10BASE-T 100BASE-TX 100BASE-T4
 1000BASE-T 2.5GBASE-T 5GBASE-T
 10GBASE-T ATM-25 ATM-51
 ATM-155 100VG-AnyLan TR-4
 TR-16 Active TR-16 Passive



Cable ID: Sample report ID3(RC)

Date / Time: 25.07.2019 08:33:34 AM

Headroom 7.6 dB (NEXT 36-45)

Test Limit: EN50173 PL2 Class Ea

Cable Type: SXXD-6A-STP-LSOHFR-B2ca

NVP: 75.0%

Operator: INTELEK spol. s r.o.

Software Version: V6.1 Build 3

Limits Version: V7.0

Calibration Date:

Main (Module): 06.12.2018

Remote (Module): 06.12.2018

Test Summary: PASS

Model: DSX-5000

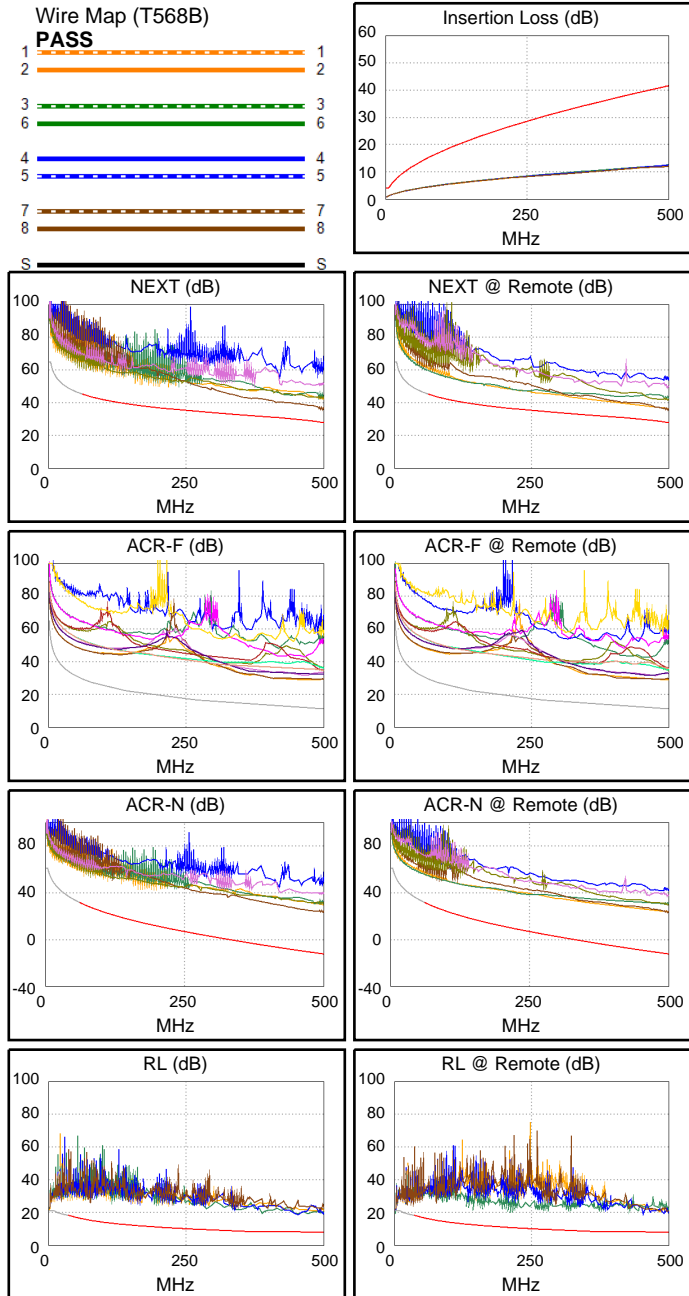
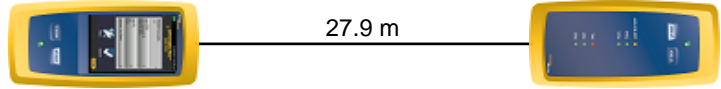
Main S/N: 2525584

Remote S/N: 2492746

Main Adapter: DSX-PLA004

Remote Adapter: DSX-PLA004

Length (m), Limit 90.0	[Pair 45]	27.9
Prop. Delay (ns), Limit 496	[Pair 36]	127
Delay Skew (ns), Limit 43	[Pair 36]	3
Resistance (ohms), Limit 20.60	[Pair 36]	4.38
Insertion Loss Margin (dB)	[Pair 36]	29.0
Frequency (MHz)	[Pair 36]	500.0
Limit (dB)	[Pair 36]	41.6



Worst Case Margin Worst Case Value

PASS	MAIN	SR	MAIN	SR
Worst Pair	36-45	36-45	36-45	36-45
NEXT (dB)	7.6	7.6	7.8	7.6
Freq. (MHz)	490.0	498.0	498.0	498.0
Limit (dB)	28.3	27.9	27.9	27.9
Worst Pair	36	36	36	36
PS NEXT (dB)	8.9	7.2	9.1	7.2
Freq. (MHz)	490.0	498.0	498.0	498.0
Limit (dB)	25.5	25.1	25.1	25.1

PASS	MAIN	SR	MAIN	SR
Worst Pair	36-12	12-36	12-36	12-36
ACR-F (dB)	16.3	16.3	17.2	17.5
Freq. (MHz)	5.0	5.0	487.0	500.0
Limit (dB)	51.3	51.3	11.5	11.3
Worst Pair	36	36	36	36
PS ACR-F (dB)	17.5	17.5	17.8	18.6
Freq. (MHz)	5.3	5.0	475.0	500.0
Limit (dB)	47.8	48.3	8.7	8.3

PASS	MAIN	SR	MAIN	SR
Worst Pair	12-36	12-45	36-45	36-45
ACR-N (dB)	27.5	23.9	35.6	35.4
Freq. (MHz)	60.3	63.8	498.0	498.0
Limit (dB)	31.9	31.1	-12.3	-12.3
Worst Pair	36	12	36	36
PS ACR-N (dB)	27.0	23.6	36.8	34.9
Freq. (MHz)	60.0	64.3	498.0	498.0
Limit (dB)	29.4	28.4	-15.1	-15.1

PASS	MAIN	SR	MAIN	SR
Worst Pair	36	78	36	45
RL (dB)	10.2	7.2	10.2	10.8
Freq. (MHz)	482.0	34.5	482.0	454.0
Limit (dB)	8.0	18.3	8.0	8.0

Compliant Network Standards:
 10BASE-T 100BASE-TX 100BASE-T4
 1000BASE-T 2.5GBASE-T 5GBASE-T
 10GBASE-T ATM-25 ATM-51
 ATM-155 100VG-AnyLan TR-4
 TR-16 Active TR-16 Passive



Cable ID: Sample report ID4(RC)

Date / Time: 25.07.2019 08:33:34 AM

Headroom 7.5 dB (NEXT 36-45)

Test Limit: EN50173 PL2 Class Ea

Cable Type: SXXD-6A-STP-LSOFR-B2ca

NVP: 75.0%

Operator: INTELEK spol. s r.o.

Software Version: V6.1 Build 3

Limits Version: V7.0

Calibration Date:

Main (Module): 06.12.2018

Remote (Module): 06.12.2018

Test Summary: PASS

Model: DSX-5000

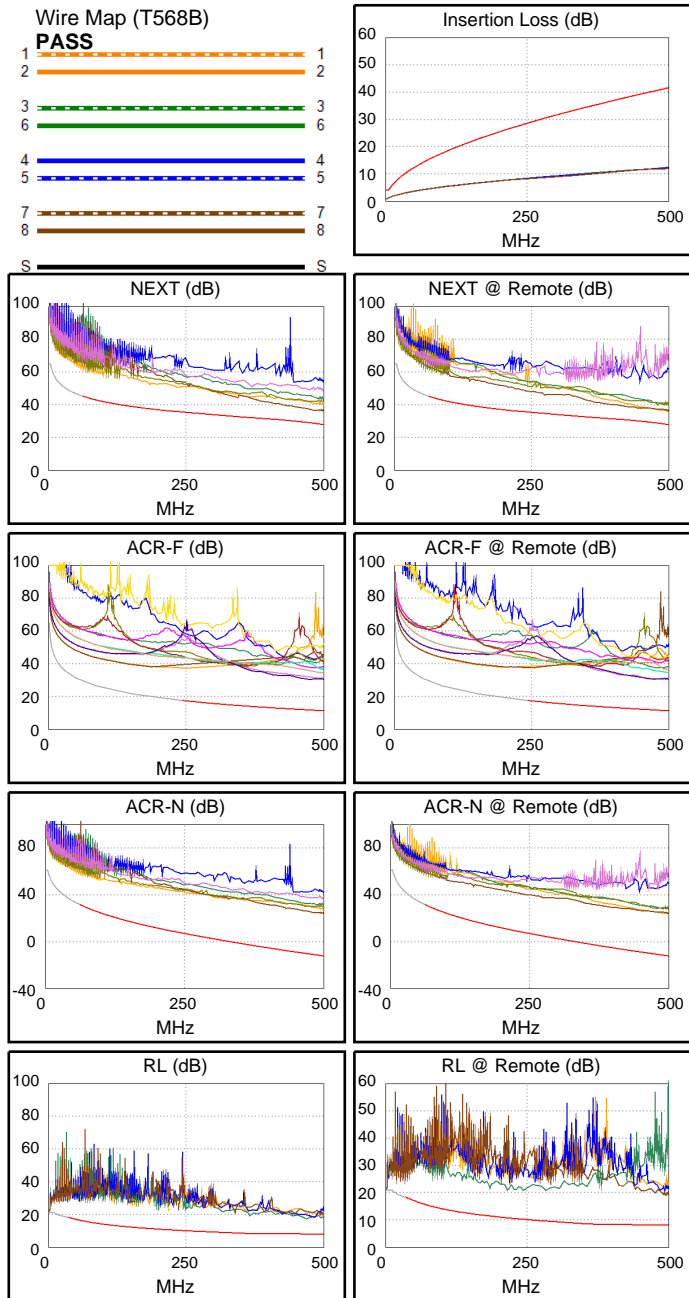
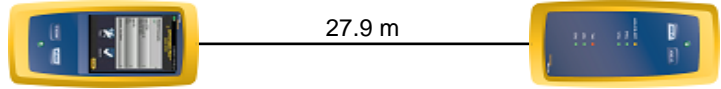
Main S/N: 2525584

Remote S/N: 2492746

Main Adapter: DSX-PLA004

Remote Adapter: DSX-PLA004

Length (m), Limit 90.0	[Pair 45]	27.9
Prop. Delay (ns), Limit 496	[Pair 36]	127
Delay Skew (ns), Limit 43	[Pair 36]	3
Resistance (ohms), Limit 20.60	[Pair 36]	4.31
Insertion Loss Margin (dB)	[Pair 36]	29.2
Frequency (MHz)	[Pair 36]	500.0
Limit (dB)	[Pair 36]	41.6



Worst Case Margin Worst Case Value

PASS	MAIN	SR	MAIN	SR
Worst Pair	36-45	36-45	36-45	12-36
NEXT (dB)	7.9	7.5	8.3	8.2
Freq. (MHz)	481.0	449.0	497.0	499.0
Limit (dB)	28.7	30.3	28.0	27.9
Worst Pair	36	36	36	36
PS NEXT (dB)	8.6	7.3	9.1	7.6
Freq. (MHz)	485.0	480.0	498.0	500.0
Limit (dB)	25.7	25.9	25.1	25.0

PASS	MAIN	SR	MAIN	SR
Worst Pair	12-36	12-36	78-36	36-78
ACR-F (dB)	16.0	15.9	18.4	18.5
Freq. (MHz)	4.9	4.3	470.0	470.0
Limit (dB)	51.5	52.7	11.8	11.8
Worst Pair	36	36	78	78
PS ACR-F (dB)	17.1	17.0	21.4	20.4
Freq. (MHz)	4.9	4.5	499.0	471.0
Limit (dB)	48.5	49.2	8.3	8.8

PASS	MAIN	SR	MAIN	SR
Worst Pair	12-36	36-78	36-45	12-36
ACR-N (dB)	26.3	26.6	36.3	36.0
Freq. (MHz)	62.8	68.3	497.0	499.0
Limit (dB)	31.3	30.1	-12.2	-12.3
Worst Pair	36	36	36	36
PS ACR-N (dB)	26.5	25.7	37.0	35.5
Freq. (MHz)	59.8	60.3	498.0	500.0
Limit (dB)	29.5	29.4	-15.1	-15.3

PASS	MAIN	SR	MAIN	SR
Worst Pair	36	78	36	36
RL (dB)	8.5	6.8	8.5	8.1
Freq. (MHz)	466.0	34.8	466.0	216.0
Limit (dB)	8.0	18.3	8.0	10.7

Compliant Network Standards:
 10BASE-T 100BASE-TX 100BASE-T4
 1000BASE-T 2.5GBASE-T 5GBASE-T
 10GBASE-T ATM-25 ATM-51
 ATM-155 100VG-AnyLan TR-4
 TR-16 Active TR-16 Passive



Cable ID: Sample report ID5(RC)

Date / Time: 25.07.2019 08:33:34 AM

Headroom 7.4 dB (NEXT 36-45)

Test Limit: EN50173 PL2 Class Ea

Cable Type: SXXD-6A-STP-LSOHFR-B2ca

NVP: 75.0%

Operator: INTELEK spol. s r.o.

Software Version: V6.1 Build 3

Limits Version: V7.0

Calibration Date:

Main (Module): 06.12.2018

Remote (Module): 06.12.2018

Test Summary: PASS

Model: DSX-5000

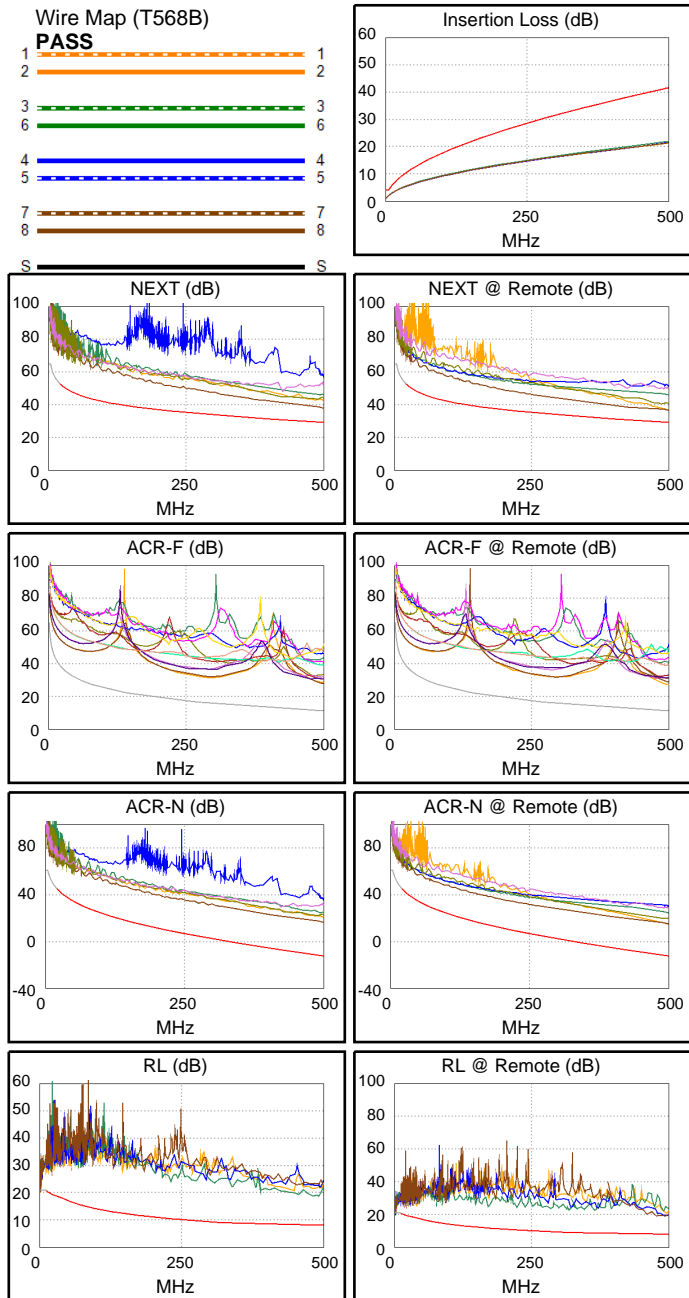
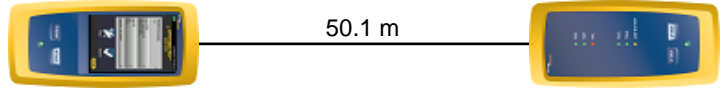
Main S/N: 2525584

Remote S/N: 2492746

Main Adapter: DSX-PLA004

Remote Adapter: DSX-PLA004

Length (m), Limit 90.0	[Pair 45]	50.1
Prop. Delay (ns), Limit 496	[Pair 36]	229
Delay Skew (ns), Limit 43	[Pair 36]	6
Resistance (ohms), Limit 20.60	[Pair 36]	7.74
Insertion Loss Margin (dB)	[Pair 36]	19.7
Frequency (MHz)	[Pair 36]	500.0
Limit (dB)	[Pair 36]	41.6



Worst Case Margin Worst Case Value

PASS	MAIN	SR	MAIN	SR
Worst Pair	36-45	36-45	36-45	36-45
NEXT (dB)	8.7	7.4	8.7	7.4
Freq. (MHz)	499.0	499.0	499.0	499.0
Limit (dB)	29.3	29.3	29.3	29.3
Worst Pair	36	36	36	36
PS NEXT (dB)	9.6	6.6	9.7	6.6
Freq. (MHz)	484.0	497.0	500.0	497.0
Limit (dB)	26.7	26.4	26.4	26.4

PASS	MAIN	SR	MAIN	SR
Worst Pair	12-36	12-36	36-12	12-36
ACR-F (dB)	15.2	15.3	16.6	16.1
Freq. (MHz)	4.3	4.9	498.0	500.0
Limit (dB)	52.7	51.5	11.3	11.3
Worst Pair	36	36	36	36
PS ACR-F (dB)	16.6	16.7	16.7	16.8
Freq. (MHz)	3.4	4.0	500.0	496.0
Limit (dB)	51.7	50.2	8.3	8.3

PASS	MAIN	SR	MAIN	SR
Worst Pair	36-45	36-45	36-45	12-36
ACR-N (dB)	23.6	20.6	28.8	27.5
Freq. (MHz)	22.5	20.5	499.0	500.0
Limit (dB)	44.1	45.1	-12.3	-12.4
Worst Pair	36	45	36	36
PS ACR-N (dB)	23.4	21.6	29.5	26.5
Freq. (MHz)	19.9	20.4	500.0	500.0
Limit (dB)	43.0	42.7	-15.3	-15.3

PASS	MAIN	SR	MAIN	SR
Worst Pair	12	78	36	78
RL (dB)	8.7	7.2	10.3	10.8
Freq. (MHz)	14.9	12.9	480.0	480.0
Limit (dB)	20.1	20.5	8.0	8.0

Compliant Network Standards:
 10BASE-T 100BASE-TX 100BASE-T4
 1000BASE-T 2.5GBASE-T 5GBASE-T
 10GBASE-T ATM-25 ATM-51
 ATM-155 100VG-AnyLan TR-4
 TR-16 Active TR-16 Passive