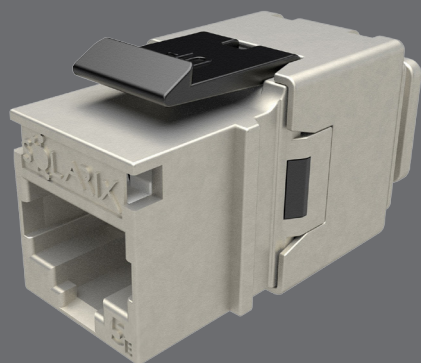


# Keystone Solarix CAT5E STP RJ45 quick tool



**Product number:**  
25286704

**Type number:**  
SXKJ-5E-STP-BK-NA

**EAN barcode:**  
8595684700312



## Key features

- Quality shielded category 5E/Class D keystone
- Designed for ethernet protocols, including 2.5GBASE-T and 5GBASE-T\*
- Very easy installation with the quick tool pliers SXKJ-NA-BU
- 50 µin gold contact plating
- Dust cover
- The keystone meets the ISO/IEC 11801, EN 50173, and ANSI/TIA 568.2-E cabling standards
- Its form factor complies with the requirements of the EN 60603-7 specifications (i.e. the keystone is compatible with other manufacturers' modular outlets that meet this standard)
- The colour of the keystone is black (inner parts, dust cover) and silver (metal body)

## Cabling standards

General standards  
Product standards

EN 50173-1, EN 50173-2, ISO/IEC 11801-1, ISO/IEC 11801-2, ANSI/TIA 568.2-E  
EN 60603-7-3

## Supported protocols

	10BASE-T	100BASE-TX	1000BASE-T	2.5GBASE-T	5GBASE-T
Supported by the SXKJ-5E-STP-BK-NA keystone	YES	YES	YES	YES*	YES*

\*) For the 2.5GBASE-T and 5GBASE-T protocols, the operability success and distance achieved may vary depending on the type and quality of installation.



## Supported PoE

	802.3af	802.3at
PoE type	Type 1	Type 2
Maximum current	350 mA	600 mA
No. of pairs used	2	2
Supported by the SXXJ-5E-STP-BK-NA keystone	YES	YES

## Physical parameters

Keystone construction	STP
Number of ports	1x RJ45 8p8c
Min. port lifetime	1000 connections/disconnections
Contacts plating	50 µin gold
Termination	quick tool
Size and type of conductor	AWG 26 – 22, solid wire
Material of non-metallic parts	FR plastic according to UL94-0
Keystone body colour	black (inner parts, dust cover) and silver (metal body)

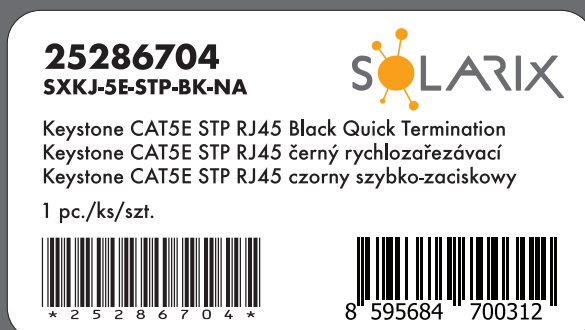
## Operation and storage

Operating temperature	-10 to 60 °C
Storage temperature	-40 to 70 °C
Max. operating humidity	93%

## Logistic parameters

Keystone packaging size (h x w x d)	145 mm x 90 mm x 20 mm, plastic bag
Weight	23 g
Included in the package	1x keystone, 1x plastic cap, 1x plastic strap, 1x dust cover
Master packaging	280x keystones
Master packaging size (h x w x d)	230 mm x 515 mm x 400 mm, carton box
Batch marking	yes (on the product, its packaging and on the transport master box)
Batch and product numbers barcode	IDAutomation Code 39, ANSI/ISO/AIM specification
EAN code type	EAN-13

## Keystone label



## Solarix warranties

Standard warranty	5 years
System warranty	30 years



## Related products

Product Number	Type Number	Description
27655142	SXKD-5E-FTP-PVC	Installation Cable Solarix CAT5E FTP PVC Eca 305m/box
27655144	SXKD-5E-FTP-PVC	Installation Cable Solarix CAT5E FTP PVC Eca 500m/box
27655147	SXKD-5E-FTP-LSOH	Installation Cable Solarix CAT5E FTP LSOH Dca-s1,d2,a1 305m/box
27655152	SXKD-5E-FTP-LSOH	Installation Cable Solarix CAT5E FTP LSOH Dca-s1,d2,a1 500m/reel
27655153	SXKD-5E-FTP-LSOHFR-B2ca	Installation Cable Solarix CAT5E FTP LSOHFR B2ca-s1,d1,a1 500m/reel
27655192	SXKD-5E-FTP-PE	Installation Cable Solarix CAT5E FTP PE Fca Outdoor 305m/box
27655195	SXKD-5E-FTP-PE-SAM	Installation Cable Solarix CAT5E FTP PE Fca Outdoor Self-Supported 305m/reel
27655197	SXKD-5E-FTP-PVC+PE	Installation Cable Solarix CAT5E FTP PVC+PE Fca Outdoor Double 305m/reel
24000100	SX24M-0-STP-BK-UNI-N	Unloaded Patch Panel Solarix 24 port Black 1U
23100101	SX9-1-0-WH	Solarix Modular Wall Outlet for 1 Keystone, White
23100102	SX9-2-0-WH	Solarix Modular Wall Outlet for 2 Keystones, White
23100103	SX9-3-0-WH	Solarix Modular Wall Outlet for 3 Keystones, White
23100201	SXF-M-1-22,5-WH-P	French Style Module Solarix 22.5 x 45mm for 1 Keystone, 90° White
23100202	SXF-M-1-45-WH-P	French Style Module Solarix 45 x 45mm for 1 Keystone, 90° White
23100203	SXF-M-2-45-WH-P	French Style Module Solarix 45 x 45mm for 2 Keystones, 90° White
23100204	SXF-M-2-45-WH-U	French Style Module Solarix 45 x 45mm for 2 Keystones, 45° White
23100206	SXF-M-1-22,5-WH-U	French Style Module Solarix 22.5 x 45mm for 1 Keystone, 45° White
40020082	SXKJ-NA-BU	Terminating Tool for SXKJ-xx-yyy-BK-NA Keystones

